

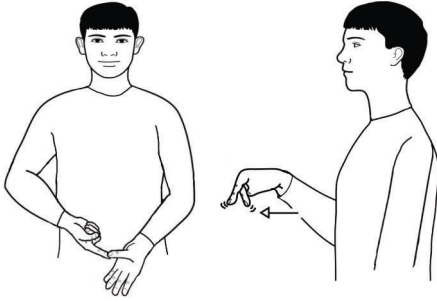
Bug Bingo

- 1) Download & print out the PDF instructions, caller cards & bug bingo cards.
- 2) Cut out the 8 Caller Cards and 4 Bingo Cards.
- 3) **To play the game:**
 - Shuffle the caller cards and place face down.
 - Decide who is going to call and hand out bug bingo cards to the other players.
 - The caller takes a caller card and reads out **either** the sign description **or** performs the sign. When finished the caller holds onto the card.
 - The other players must decide which bug is being described **or** performed and cross it off their card.
 - Play continues until someone has crossed off all the bugs and calls “**Bug Bingo**”.
 - The caller must then check that the player crossed off the bugs correctly.
 - If they have the player wins; however, if they have not crossed off the correct bugs, then that person is disqualified and play continues until someone correctly identifies the bugs and completes their card.

Caller Cards

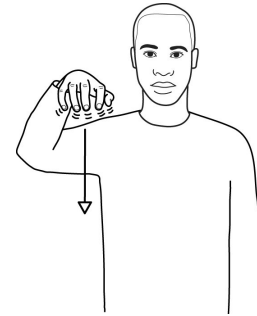
ANT

Make letter shape "A"; then working bent "V" hand (palm down, pointing forward) moves forwards with fingers wagging alternately.



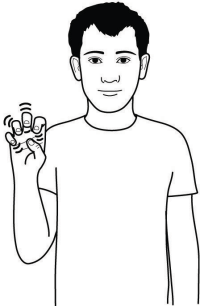
SPIDER

Working clawed hand (palm down, pointing forward) by side of head, moves down with fingers wriggling.



BEE

Working loosely bunched hand (palm forward, pointing up) fingers wriggling.



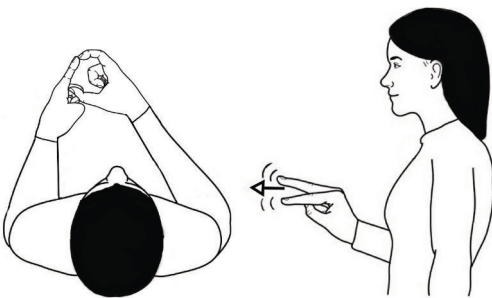
LADYBIRD

Make letter shape "L"; then working bent "V" hand (palm forward, pointing up) moves forwards, fingers wagging alternately.



DRAGONFLY

Make letter shape "D"; then working bent "V" hand (palm forward, pointing up) moves forwards, fingers wagging alternately.



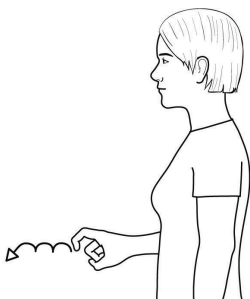
GRASSHOPPER

Make letter shape "G"; then working bent "V" hand (palm down, pointing forward) moves forwards with fingers wagging alternately.



WORM

Working index hand (palm down, pointing forward) finger flexes while hand moves forwards.



SNAIL

Working index and middle fingers flick out from underneath supporting cupped hand (palm down, pointing forward/in).

